

# Printers

## Large Copier or Multifunction Cannot Scan to SMB in Windows 10/11, makes such as Canon, Kyocera, Ricoh, Savin

In small workgroups without a server, SMB scanning may be necessary when working with a large multifunction. As some of these use older technology, they require traditional SMB v1 to be installed to allow the file transfer.

Here's how to add SMB to Windows 10:

Start

Type, "Control Panel"

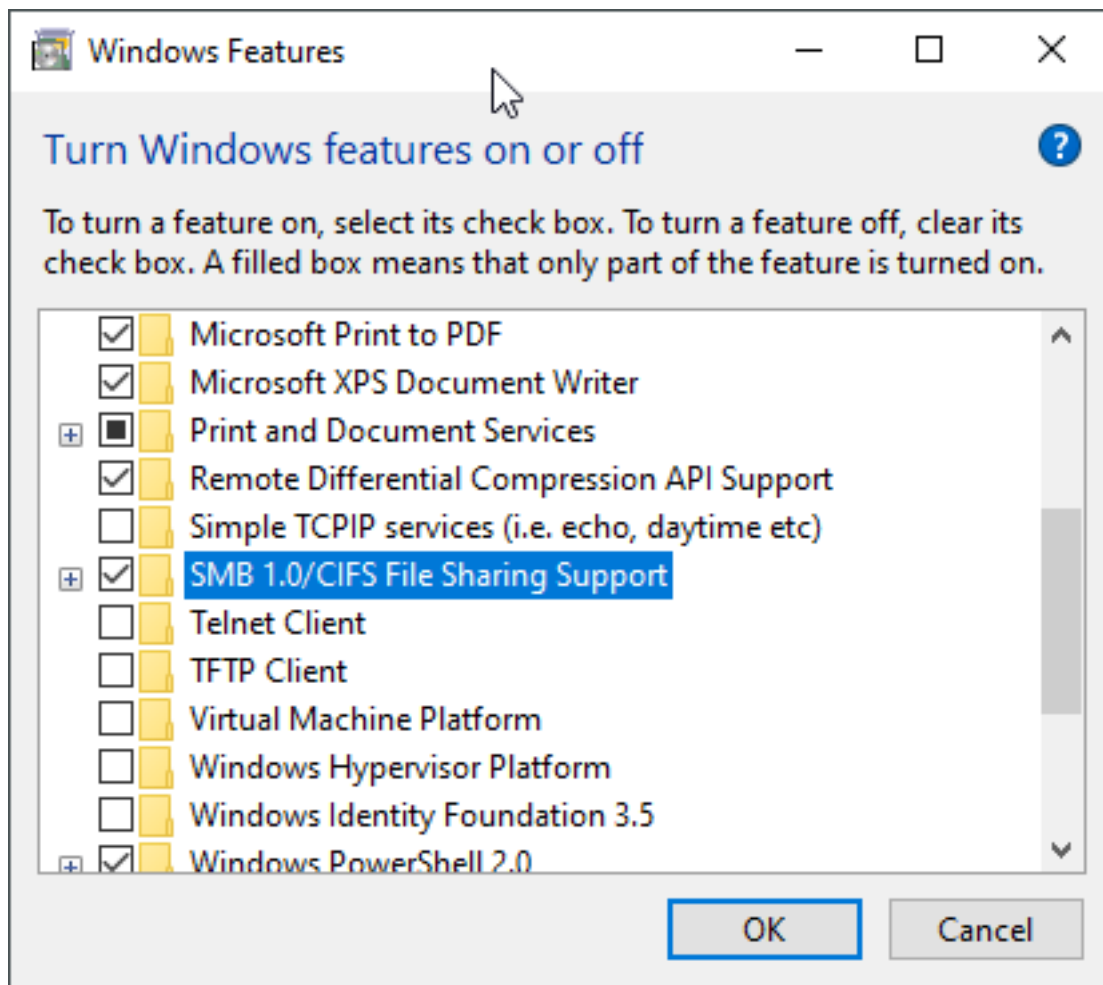
Click Control Panel

Click Programs and Features

Click "Turn Windows features on or off" (top left of window)

Select/Check "SMB 1.0/CIFS File Sharing Support"

Click OK



Unique solution ID: #1088

Author: n/a

Last update: 2022-11-05 17:52